

# PMD2 Plus/EZHD

ELLIPTIC, MULTI-ZONE AND HEAVY DUTY  
WALK-THROUGH METAL DETECTOR

- Superior Detection and Throughput
- Very High Discrimination of Non-Threat Items
- 60 localization zones:
  - 20 vertical • 3 lateral
- Aesthetic, Unobtrusive and Light Weight
- Rapid Installation: no tools required for assembly
- Weather Resistant: IP65 protection
- Compliant with the strictest Security Standards for weapons detection



PORTABLE  
CONFIGURATION  
AVAILABLE



[www.ceia.net](http://www.ceia.net)

*Threat Detection through Electromagnetics*

CEIA reserves the right to make changes, at any moment and without notice, to the models (including programming), their accessories and options, to the prices and conditions of sale



## PMD2 Plus/EZHD

Enhanced Walk-Through Multi-Zone Metal Detector



Strict requirements and detection needs call for security checkpoints to perform efficiently even under very challenging conditions. Choosing the right metal detector is essential.

**KEY CONSIDERATIONS INCLUDE IDENTIFYING:** the size and composition of the items to detect [**SECURITY LEVEL**], items and levels of personal effects to ignore [**DISCRIMINATION**], the number of people that will be passing through the checkpoint [**THROUGHPUT**]. These characteristics must even be obtained in environments with electrical and mechanical interferences, therefore the walk-through metal detector must present excellent immunity [**IMMUNITY**].

The PMD2 Plus/EZHD is ideal for outdoor events or checkpoint locations that move frequently and features tool-free installation, weather-resistant protection (IP65) and ease of system use for screening personnel.

### Detection Features



VERY HIGH SENSITIVITY

- Capability to detect the full range of metal weapon threats even within body cavities
- Met-Identity technology for Identification of Threat Composition



METAL KIND IDENTIFICATION

The most advanced Security Standards require detection of all ferrous and non-ferrous metal weapons and of those constructed in special non-magnetic alloys. The PMD2 Plus/EZHD detects firearms and knives of this type, even when they are hidden within body cavities, and accurately indicates the position of the threat, its intensity and its prevalent composition. Inspection personnel thereby acquire thorough knowledge of the metal item and can act, according to procedures, with maximum effectiveness and security.



- 60 pinpointing zones with high resolution & precision:
  - 20 Vertical
  - 3 Lateral



#### MET-IDENTITY TECHNOLOGY

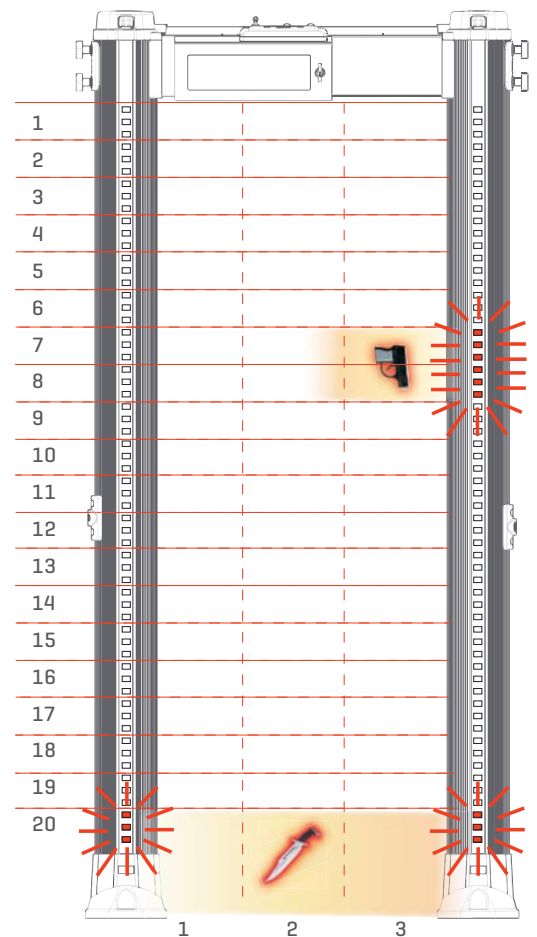
With Met-Identity technology, the PMD2 Plus/EZHD allows you to know where, how much and what type of metal is being brought into the secure area.



➤ Ferrous Metal



➤ Non Ferrous Metal



#### 60 LOCALIZATION ZONES

With left, center and right indication.

## Unique Alarm Signalling



- 4 Multi-Zone Display Bars, each programmable as entry Stop/Go and/or local alarm indication
- High visibility of the control unit and the zone indication independent from the operator position and the installation environment

Accurate signaling is essential for best operation and flow management. The PMD2 Plus/EZHD provides the user with fully-programmable signaling. Both entry-points can indicate with a high level of accuracy, even simultaneously, the vertical and lateral areas of transit of the threats detected, and can also be configured as 'traffic lights' to control transits through the detector.



- Flexible Acoustic Alarm Signaling System:
  - ✓ 10 Continuous and Pulsed Tones
  - ✓ 34 Special Sounds
- 10 Acoustic Intensity Levels

A complete acoustic alarm system allows personalization of the alarm tones and intensities, with a wide choice of continuous, pulsed and special tones at different levels of intensity. The wide volume control dynamic allows operation even in very noisy environments.



- High Precision Transit Counter:
  - ✓ In-Bound Transits
  - ✓ Out-Bound Transits
  - ✓ Alarm Rate
  - ✓ Automatic Compensation for repeated transits of the same person

The metal detector provides an automatic count of the people passing through the access point in both directions and the related nuisance alarm percentage.



### 4 MULTI-ZONE DISPLAY BARS

Light bars indicate metal position vertically and laterally and can also show pacing lights.



### HIGH PRECISION TRANSIT COUNTER

Two photocells fitted into the archway allow counting of transits, alarms and percentage of alarms.

## Unmatched Throughput



- Cutting-edge discrimination technology allows personal effects to be ignored, creating rapid transit flow

The transit volume magnetic scanning system, invented by CEIA and applied since production of the first zonal Metal Detectors in 1986, allows state-of-the-art detection and discrimination results.

The PMD2 Plus/EZHD has an extremely low nuisance alarm rate even at the strictest Security Levels requested today, and therefore allows high transit flow rates and the minimum need for intervention by inspection personnel.



# PMD2 Plus/EZHD

Enhanced Walk-Through Multi-Zone Metal Detector

## Most Powerful and Versatile Security Features



- Up to 50 built-in Security Programs
  - Up to 30 International Standards
  - Up to 20 Customizable Levels

Setting the Security Levels could not be easier and more versatile than in the PMD2 Plus/EZHD. Users can choose directly from the known International Standards or request implementation of a Standard personalized to their own requirements. Users can also create their own work program and save it in internal memory.



- Chip Card system for fast, simple and secure parameter changes (i.e. alarm volume and tone, counter reading, etc...) and security level selection

One unique characteristic of the CEIA Metal Detectors is the chip-card system, which allows the Head of Security to set the Security Level quickly, reliably and without having to program the device in any way.



- Any security standard can be enhanced with selectable random alarm probability



### CHIP CARD SYSTEM

Chip Card for automatic selection of Security Levels and parameter changes.

## Communication Capabilities

Extended communication capabilities including data networking for alarm and status supervision through wireless TCP/IP. The PMD2 Plus/EZHD can be fitted with the APSiM2 Plus Wireless Network Module.

TYPE OF OPERATION	Ethernet	Infrared	Bluetooth
Maintenance	○		■
Remote Control	○	■	■
Remote Data collection	○		

■ STANDARD ○ OPTION

Bluetooth

Web-Browser

Network management

The **APSiM2 Plus** integrates a secure web server using state-of-the-art SSL and WPA2 security protocols.

The **APSiM2 Plus** can set up a local secure wireless network without requiring additional devices. The wireless network covers a 300ft wide area on open site conditions. Any authorized device capable of wireless connectivity and https browsing (such as tablet pc, smart phones and laptops) can access the following functionalities:

- Automatic monitoring of the self-diagnostics, battery level and security level of the installed PMD2 Plus/EZHD group.
- Visual representation of the transits flow through the PMD2 Plus/EZHD. The transits data is stored in the **APSiM2 Plus** for up one year and can be downloaded through date selection.



Visual representation of the transits flow through the PMD2 Plus/EZHD.

## Rapid Installation



ONE TOUCH  
AUTO-SETTING

- One touch automatic installation (OTS)  
Innovative function assisting the installation through an automatic step-by-step procedure.
- Highly adaptable for installation in all environments
- Automatic Compensation function to adjust for windy environments



SELF-DIAGNOSTIC  
SYSTEM

- Continuous self diagnostics assure monitored performance reliability
- Upper tie-down points available for stabilization in case of strong winds (up to 25 mph)



**QUICK INSTALLATION**

*No tools required.*

## Breakthrough Value



INTERFERENCE  
IMMUNITY

- Industry Leader in Immunity against External Interferences  
Exceptional immunity to environmental interferences makes the Metal Detector easy to use even when electrical noise is encountered.



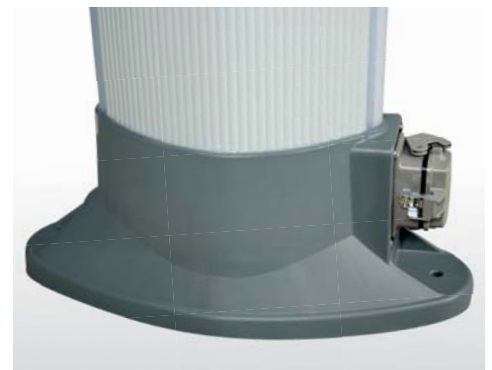
UNMATCHED  
RELIABILITY

- Superior CEIA reliability allows maximum ROI  
The overall system is characterized by sturdy, reliable electronic and mechanical construction.



MAINTENANCE  
FREE

- No periodic re-calibration and preventive maintenance required
- Monolithic construction, high degree of protection against dust and water, and high stability



**NEW BOOT DESIGN**

*Much higher stability.*

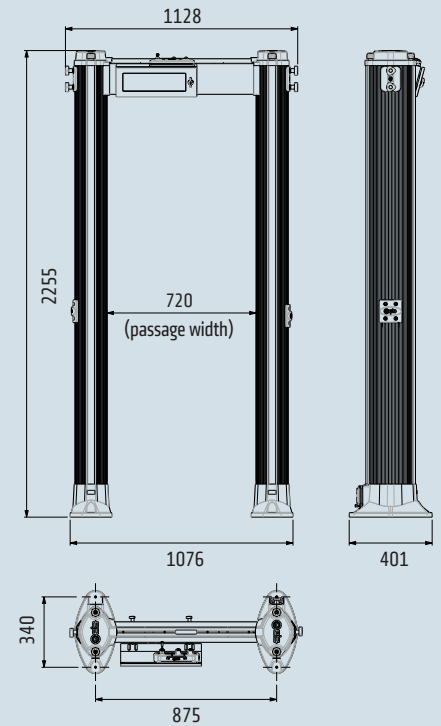


## Model Configuration

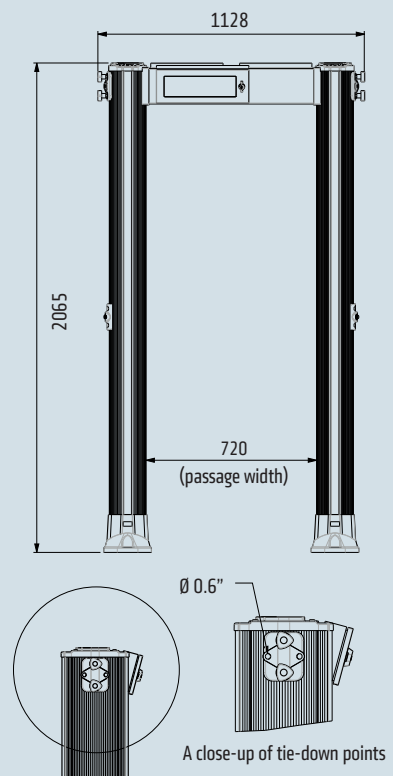
Features	PMD2 Plus/EZHD (Standard version)	PMD2 Plus/EZHD-N (Navy reduced height version)
Reduced height for low-ceiling applications	—	■
4 display bars each programmable as zone indicators and/or pacing lights	■	■
60 localization zones (20 vertical x 3 lateral) with left, center and right indication	■	■
Chip Card Reader	■	■
Bluetooth and infrared communication	■	■
Programmable Random Alarm capability*	■	■
3-Level Password and hardware key access protection	■	■
Met-Identity technology (separate Ferrous and Non-Ferrous alarm signaling)	■	■
One Touch Automatic Self Installation (OTS)	■	■
Automatic Operational Functional Verification (OFV)	■	■
Automatic Vibration Compensation (AVS, EVA)	■	■
Automatic Channel Search (CS)	■	■
Automatic Floor Gain Adjustment (FGA)	■	■
Automatic Technical Functional Verification (TFV)	■	■
Automatic Environmental Noise Compensation (ENA)	■	■
Powered by safe low voltage DC	■	■
Weather resistant protection	■	■
Anti-vandalism, anti-tampering protection	■	■
IP65 protection (includes weather resistant and anti-vandalism options)	■	■
High precision transit counter	□	□
Integrated web-server & logger	□	—
Transport case	□	□

### Dimensions [mm]

#### PMD2 Plus/EZHD



#### PMD2 Plus/EZHD-N



■ STANDARD □ OPTION \*Transit Counter required

## Options

### ➤ Integrated Web-server & Logger

Anti-tamper on/off switch, RS-232, USB, 10/100 baseT Ethernet interface, data logger, real-time clock, integrated web-server, statistical transit data analysis. Part # APSIM2Plus/E

### ➤ Fast, high precision transit counter

Two photocells fitted into the archway allow counting of transits, alarms and percentage of alarms. Part # 62928

### ➤ Transport case

- Protects the metal detector during transport and storage
- Facilitates moving the metal detector
- Set to include all parts and accessories
- Minimizes storage space
- Dimensions:  
2340 mm x 420 mm x 760 mm
- Weight (case only): 60 kg  
(Part # 64296)



## Accessories

### ➤ Chip cards

Chip cards for simple and secure selection of security Levels and parameter setting. List of chip-cards available on request.



### ➤ MBSU-2-HD

Separate, compact long life power supply in stainless steel case and high protection degree (IP65), with embedded fast charger (Part # MBSU-2-HD):

- 13.6 hours typical (10 hours minimum) continuous operation
- 6.5 hours typical charging time



### ➤ Elliptic Gate Protective Cover

Protective Cover is designed to protect the gate in permanent outdoor installations during periods of inactivity from water, ultraviolet rays, humidity, dirt, sand, temperature spikes and other environmental hazards. The Protective Cover is column-fitted, durable and weatherproof. Yet it is also breathable, allowing moisture to evaporate from inside.

The cover is simple to install and to remove.

Part # 64395

Open the link below to see Elliptic Gate Protective Cover video:

[www.ceia.net/security/EllipticGateProtectiveCover.aspx?lan=us1](http://www.ceia.net/security/EllipticGateProtectiveCover.aspx?lan=us1)



### ➤ MD-Scope2

Powerful, PC based installation and service software. Includes oscilloscope and terminal functionality (part # MD-SCOPE2). The connection is performed via bluetooth (standard) or via cable connection (part # 3805).



### ➤ Stabilizing plates

Comfortable alternative to direct floor mounting.

- Standard version: part # 46705
- Outdoor version: part # 46706
- For uneven floor and mobile applications: part # 46938



### ➤ RCU2

Control unit for full remote access, including alarm signaling and programming of CEIA Walk Through Metal Detectors (part # RCU2). The connection is performed via bluetooth (standard) or via cable connection (part # 3618).



### ➤ Upper tie-down points

Part # 64886



### ➤ IRC-1

Infrared Remote Controller for wireless remote programming of the control unit. Part # 47180



### ➤ Ceiling power adapter

(Part # 63732)



### ➤ Test samples kit

Reference Samples for accurate verification of the Security Level. Includes guided procedures and certificate of calibration.

Part # EMD-SK-GAL  
Part # EMD-SK-GDML



# PMD2 Plus/EZHD

## Enhanced Walk-Through Multi-Zone Metal Detector



### Specifications

<b>KEY FEATURES</b>	Wide range of threat detection from guns to ½ cutter blade	Automatic Environmental Noise Compensation (ENA)
	Excellent discrimination of personal metal effects	Met-Identity technology identifies and signals the metal type in real time
	60 localization zones (20 vertical x 3 lateral) with left, center and right indication	High precision bidirectional counter with automatic rescreening compensation
	One touch automatic self installation (OTS)	Chip Card capability for fast, simple, and secure programming
	Automatic Operational Functional Verification (OFV)	Random alarm capability programmable from 0% to 100%
	Automatic Vibration Compensation (AVS,EVA)	Exceptional Immunity to external interferences
	Automatic Channel Search (CS)	Powered by safe low voltage DC
	Automatic Floor Gain Adjustment (FGA)	Standard Interfaces: Bluetooth, Infrared
	Automatic Technical Functional Verification (TFV)	Other available interfaces: Ethernet
<b>QUALITY</b>	Continuous self diagnostic system	
	Proven reliability	
	No periodic re-calibration and preventive maintenance required	
	No scheduled maintenance	
	Fully digital design	
<b>WALK-THROUGH GATE STRUCTURE</b>	State-of-the-art, robust, washable and compact elliptical columns	
	Protected against aging, weather and wear	
<b>CENTRAL CONTROL UNIT</b>	Ergonomic and robust design	
	High visibility alphanumeric display and programming keyboard	
	Stainless steel and anti-vandalism construction	
	Access to the front panel protected by hardware key and 3 levels of passwords	
<b>ALARM SIGNALING</b>	<b>VISUAL SIGNALS</b>	Multi-zone display bar for "height on person" localization
		4 light bars with selectable entry/exit and pacing indication
		Green and red metering signals proportional to the mass of the detected target
	<b>AUDIO SIGNALS</b>	10 selectable continuous and pulsed tone plus 34 special tones
		10 selectable sound intensities ranging from 0 to 90 dbA at 1m
<b>TYPE OF SIGNALING</b>	<b>VISUAL</b>	Fixed or proportional to the mass in transit - visible from 6m under lighting of 4000lux
	<b>VISUAL ZONE INDICATION</b>	60 distinct zones (20 vertical x 3 lateral) entry and exit side
<b>PROGRAMMING</b>	Up to 50 built in security programs	
	Remote via Infrared Remote Control Unit, Bluetooth™ or Ethernet 10/100 base T (option) interface	
	<b>SECURITY LEVEL</b>	International Standard (IS) command
		Chip card
	Local by Control Unit alphanumeric display and keyboard	
	Programming and chip card access protected by user and super-user passwords	
<b>OPERATIONAL FEATURES</b>	Very high discrimination and transit flow rates five or more times greater than other metal detection systems	
	Quick reset time as short as 0.2 seconds for high throughput rate	
	Very high detection speed (up to 15m/sec.)	
	Built-in operational functional verification	
	One-touch key reading of inbound, outbound and Security Level Data	
<b>INSTALLATION DATA</b>	Automatic synchronisation between two or more metal detectors with distance of down to 15 cm without the use of external cables	
	Automatic Installation function (OTS)	

### Environmental Data

- POWER SUPPLY : 100...240V~ -10/+15%, 47...63Hz, 40 VA max
- OPERATING TEMPERATURE: -20°C to +70°C (-37°C to +70°C upon request)
- STORAGE TEMPERATURE: -37°C to +70°C
- RELATIVE HUMIDITY: 0 to 95% (without condensation)

### Certification and Compliance

- Compliant with the applicable Standards for Enhanced Metal Detectors
- Compliant with the applicable electromagnetic Standards on Human Exposure and Pacemaker Safety
- Compliant with all Airport Security Standards worldwide
- Compliant with applicable International Standards for electrical safety and EMC
- Harmless to magnetic media (CDs, tapes, etc.)

### Comprehensive support

CEIA PROVIDES FULL OPERATIONAL AND TECHNICAL TRAINING SUPPORT BY CERTIFIED PERSONNEL EITHER AT CEIA FACILITY OR AT CUSTOMER PREMISES

- phone technical support
- in-house and on-site repair/services
- standard and custom training



Zona Industriale 54/G, 52041 Vicinaggio - Arezzo (ITALY)  
Tel.: +39 0575 4181 Fax: +39 0575 418298 E-mail: infosecurity@ceia-spa.com

DP060K0066V3UK-63233

www.ceia.net

CEIA reserves the right to make changes, at any moment and without notice, to the models (including programming), their accessories and options, to the prices and conditions of sale

